

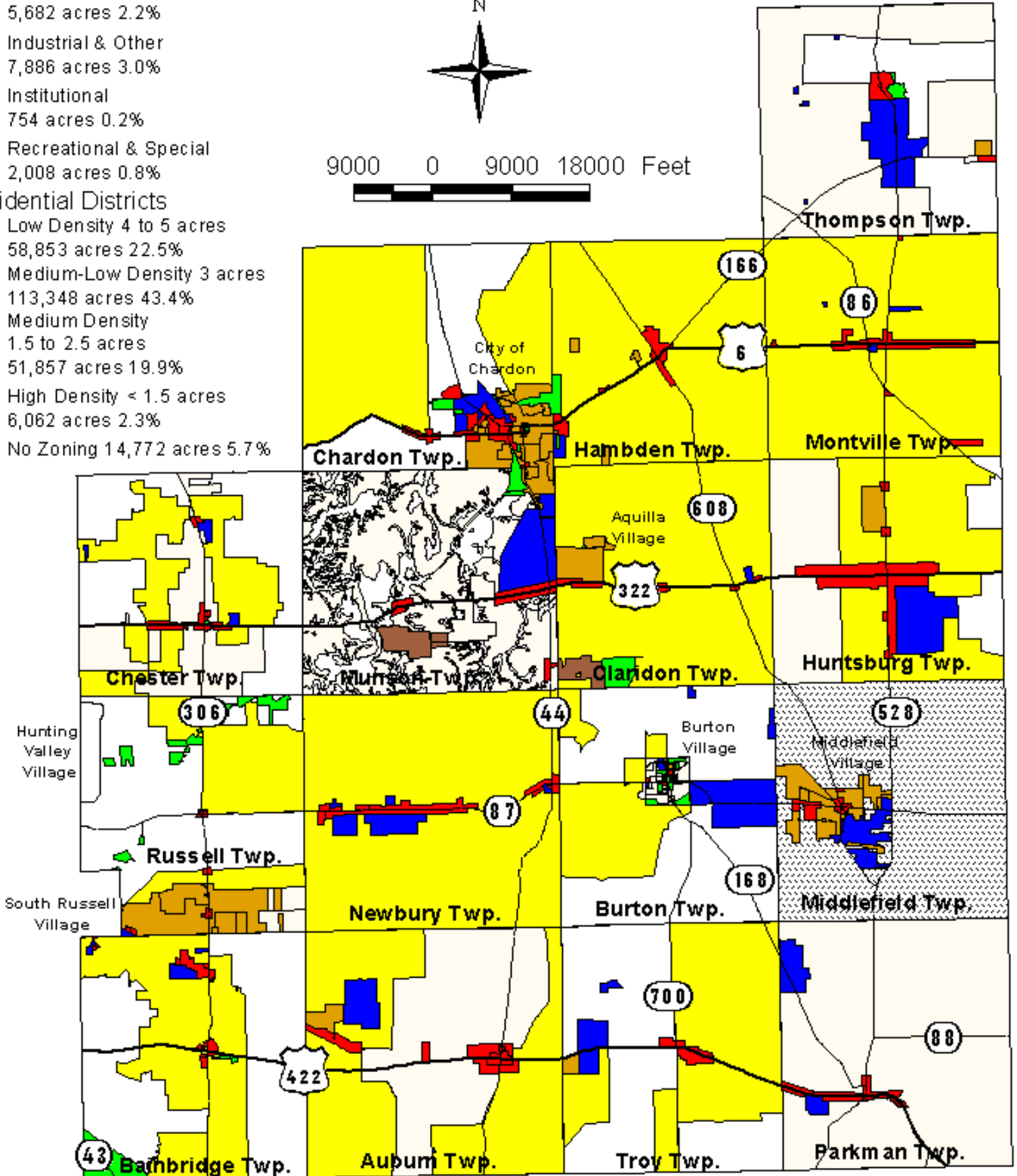
Geauga County Generalized Zoning Map

Generalized Zoning Districts

- Commercial
5,682 acres 2.2%
- Industrial & Other
7,886 acres 3.0%
- Institutional
754 acres 0.2%
- Recreational & Special
2,008 acres 0.8%

Residential Districts

- Low Density 4 to 5 acres
58,853 acres 22.5%
- Medium-Low Density 3 acres
113,348 acres 43.4%
- Medium Density
1.5 to 2.5 acres
51,857 acres 19.9%
- High Density < 1.5 acres
6,062 acres 2.3%
- No Zoning 14,772 acres 5.7%



Source: Geauga County Planning Commission, Township & Municipal Zoning Maps

Prepared by: Geauga County Planning Commission September 2001
This map is for general reference purposes only and shall not serve as an official zoning map for any township or municipality shown hereon.