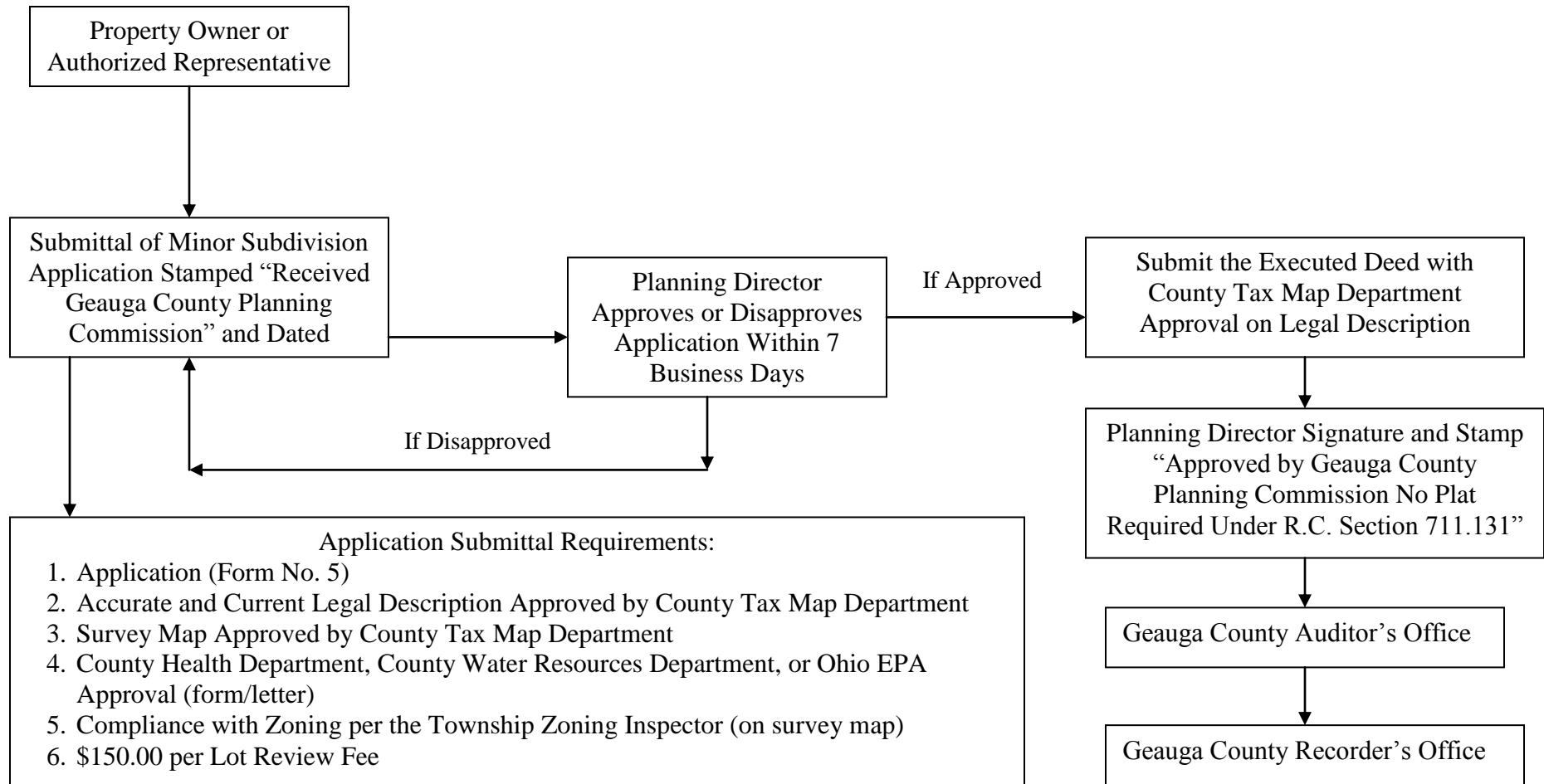
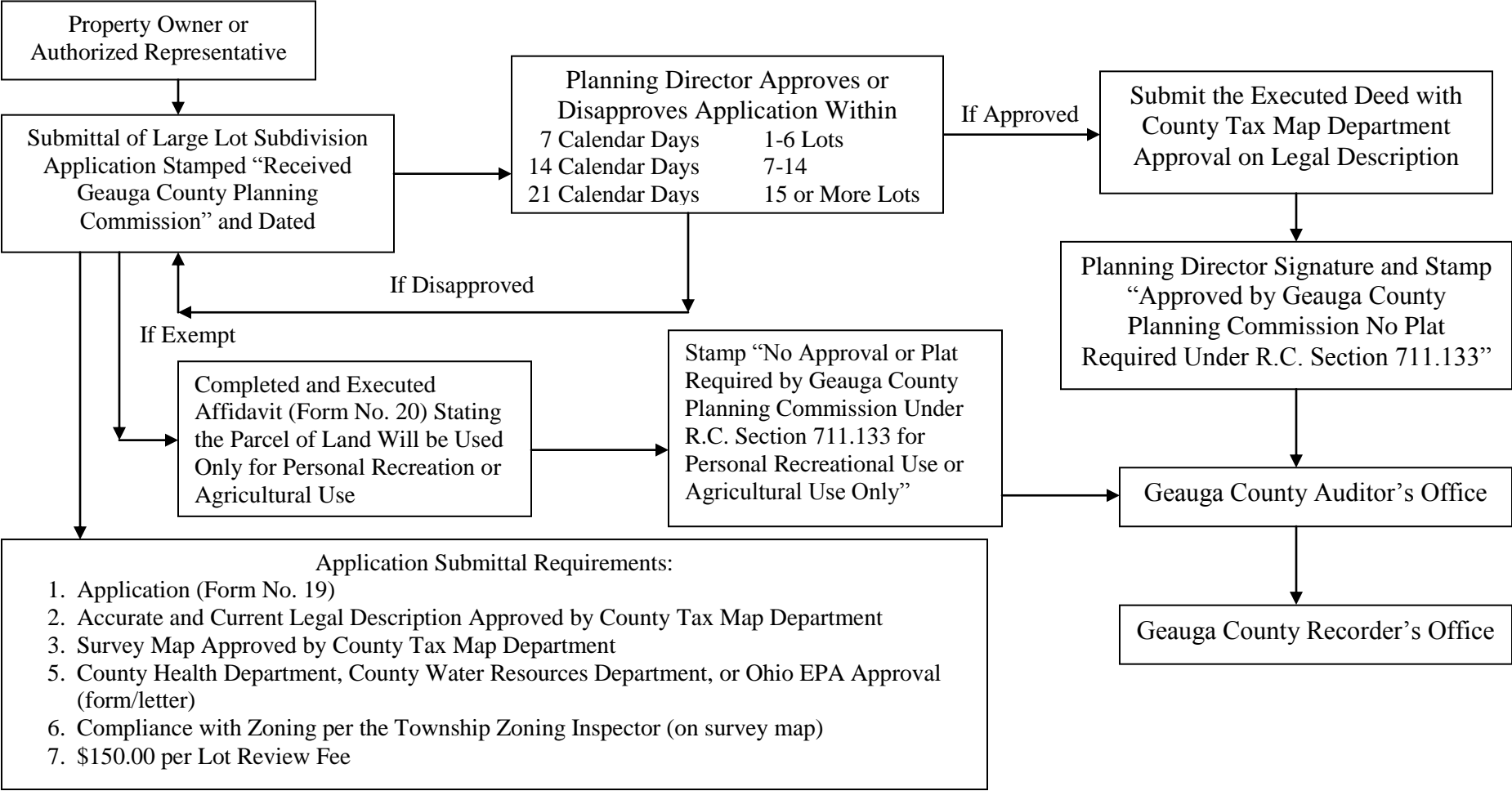


**GEAUGA COUNTY PLANNING COMMISSION
MINOR SUBDIVISION REVIEW PROCEDURE
PROPOSED LOTS 5 ACRES OR LESS IN SIZE**



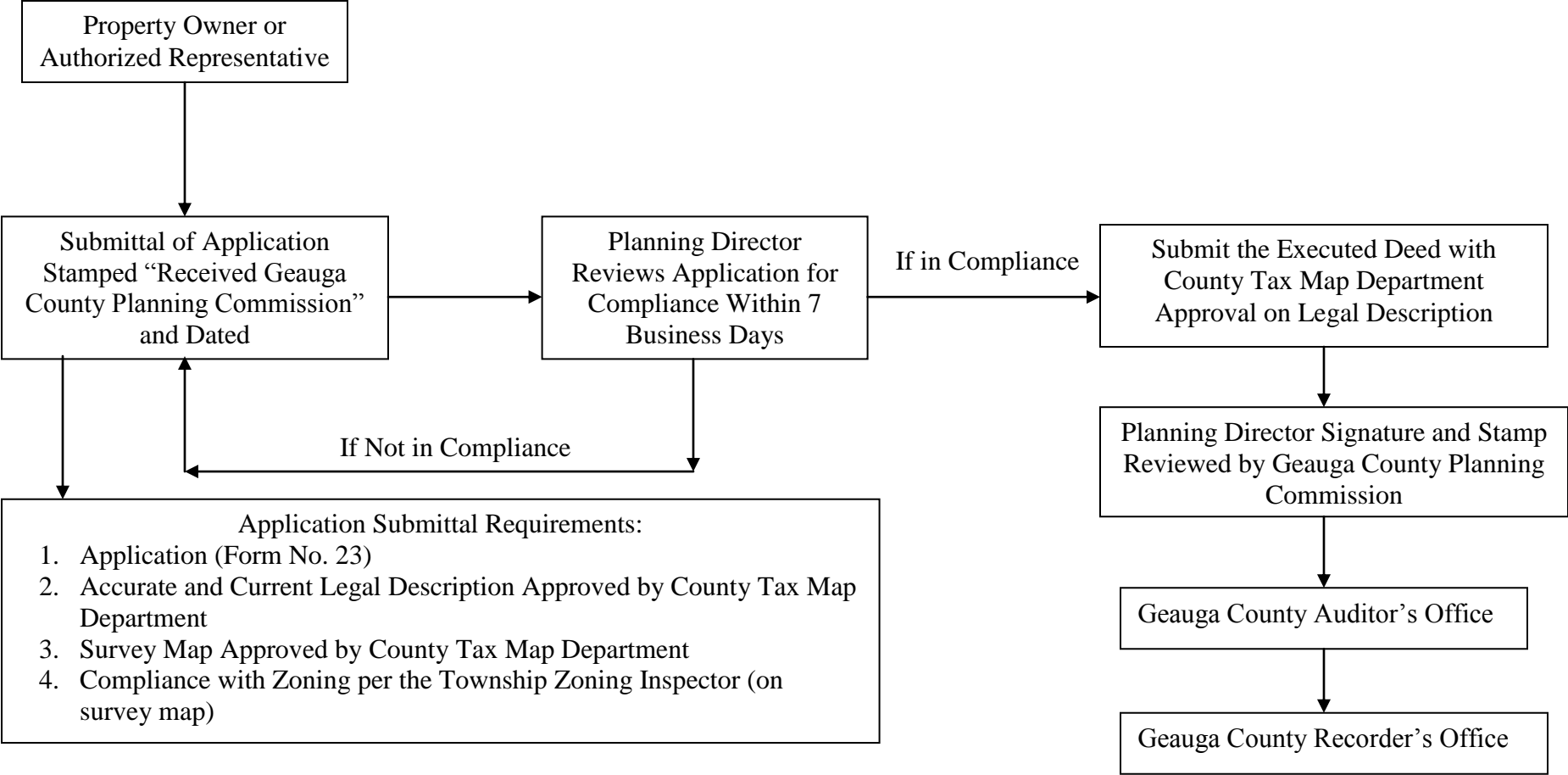
Note: This flow chart is for reference only. See Article III, Sections 301 and 303 of the Geauga County Subdivision Regulations.

**GEAUGA COUNTY PLANNING COMMISSION
LARGE LOT SUBDIVISION REVIEW PROCEDURE
PROPOSED LOTS MORE THAN 5 ACRES AND UP TO 20 ACRES IN SIZE**



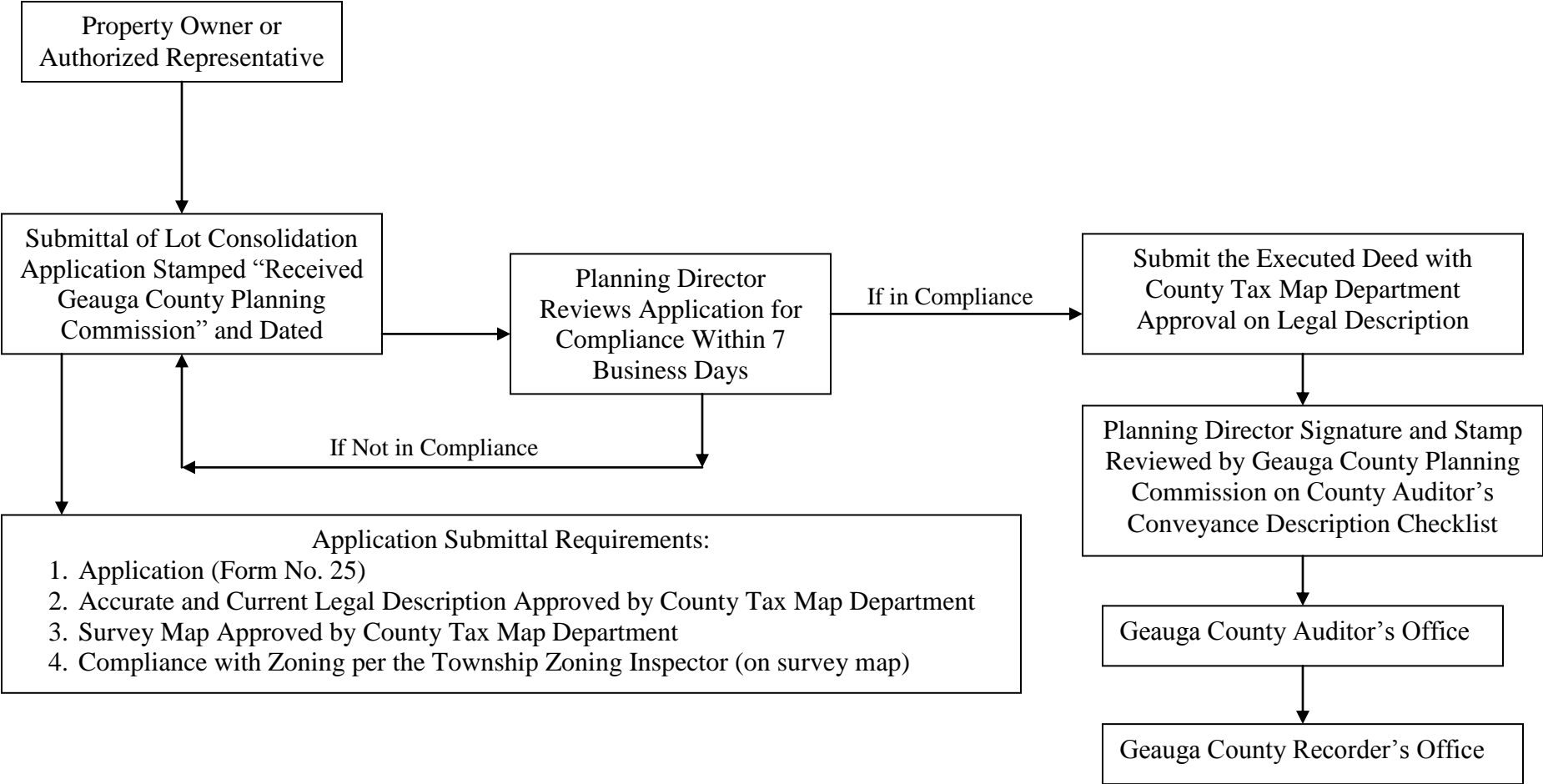
Note: This flow chart is for reference only. See Article III, Section 305 of the Geauga County Subdivision Regulations.

**GEAUGA COUNTY PLANNING COMMISSION
REVIEW PROCEDURE
PROPOSED LOTS NOT CLASSIFIED AS A SUBDIVISION
OVER 20 ACRES IN SIZE OR TRANSFER TO ADJACENT OWNER
THAT DOES NOT CREATE AN ADDITIONAL BUILDING SITE**



Note: This flow chart is for reference only. See Article III, Sections 309 and 310 of the Geauga County Subdivision Regulations.

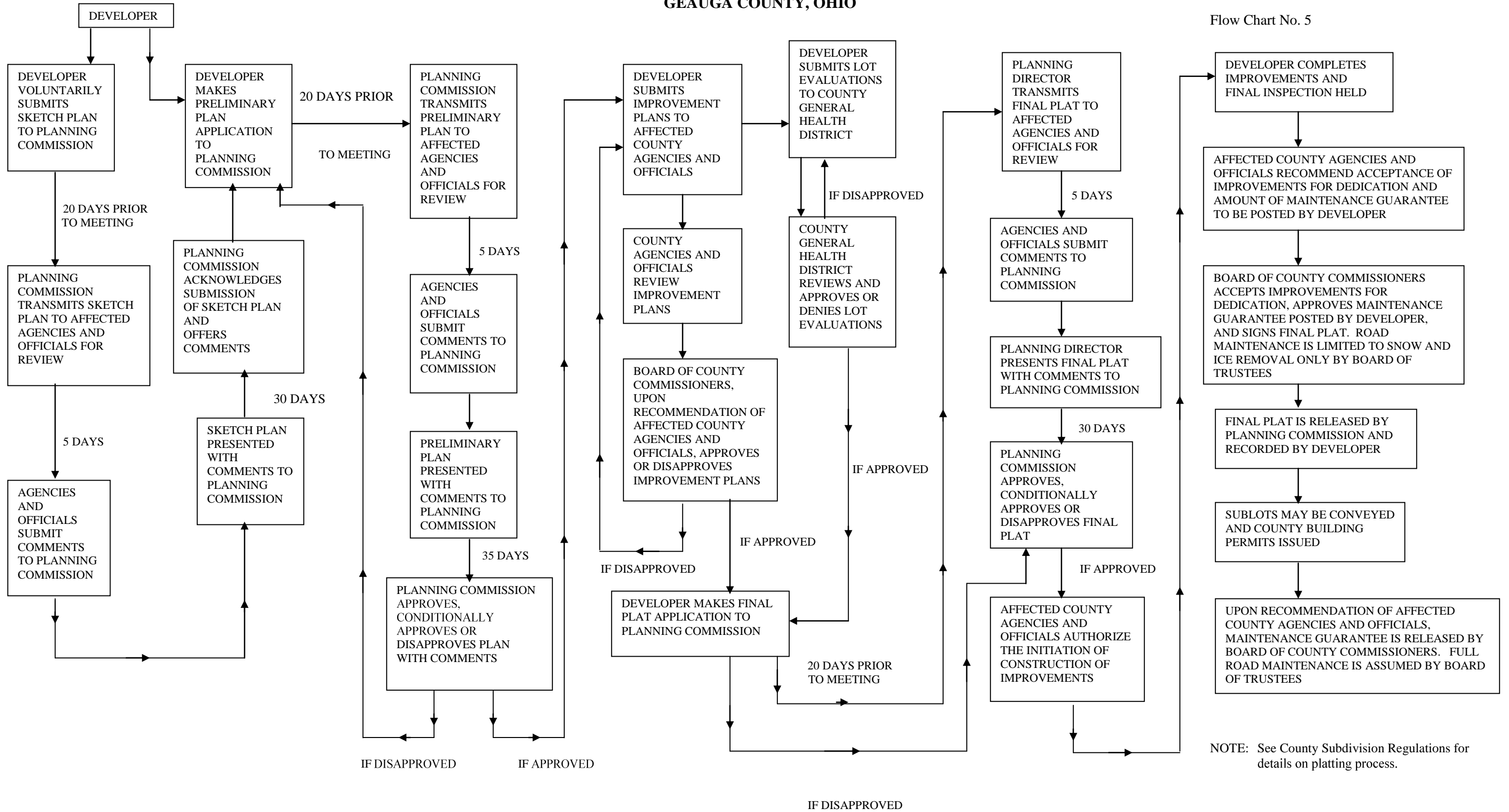
**GEAUGA COUNTY PLANNING COMMISSION
REVIEW PROCEDURE
PROPOSED LOT CONSOLIDATION**



Note: This flow chart is for reference only. See Article III, Section 311 of the Geauga County Subdivision Regulations.

**THE MAJOR SUBDIVISION PLATTING PROCESS
GEAUGA COUNTY, OHIO**

Flow Chart No. 5



NOTE: See County Subdivision Regulations for details on platting process.